



ISGUS TIME MANAGEMENT

Your partner for complete solutions!

ZEUS[®]
ZEUS[®]

- ▶ Time and Attendance
- ▶ Integrated Web Technology
- ▶ Web Client
- ▶ WebWorkflow
- ▶ Web Bookings

ZEUS[®] Time Management - Also in the Web

ZEUS[®] Time Management together with ZEUS[®] WebServices delivers consistent, intuitive and dependable solutions through state-of-the-art technologies such as Intranet, Internet and E-mail.

ZEUS[®] adapts to your needs - not the reverse. ZEUS[®] is a comprehensive solution for any business sector and any company size. Its extensive functionality and modular structure is managed through an intuitive user interface enabling it to be simply adapted and aligned with the changing requirements of personnel management.

Flexible adaptation of working times to actual or seasonal requirements along with comprehensive absence management and holiday planning are key features.

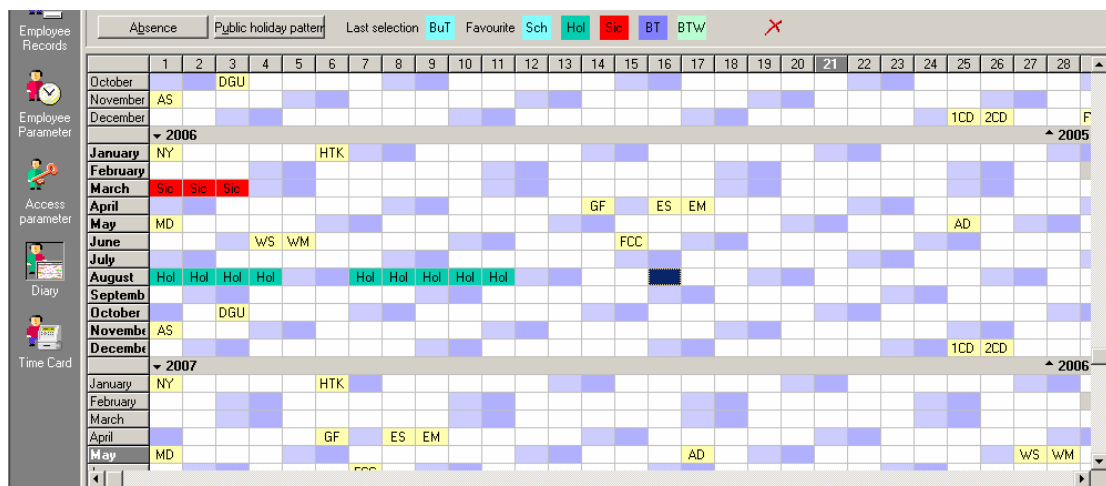
ZEUS[®] incorporates both multicompany and multi-lingual features.

With ZEUS[®], time consuming routine activities for personnel administration are simplified and effectively reduced.

Time related data to support and facilitate management decisions is instantly available allowing you to efficiently manage your staff, employees and your business.

Performance that Convinces

Flexible adaptation of working times to actual or seasonal requirements along with comprehensive absence management and holiday planning are key features. Annual holiday entitlements can be based on the length of continuous employment, on the employee's age or on statutory regulations.



The Update Navigator monitors absences and forgotten bookings and allows the user to process adjustments immediately.

ZEUS[®] WebServices

The web connects all company locations, subsidiaries and home offices, providing a worldwide communications platform.

ZEUS[®] WebClient

ZEUS[®] WebClient supports the creation of new employees, absence planning, insertion of forgotten bookings and corrections from any internet enabled PC. Once authorisations have been assigned, management and employees can also access reports and detailed analysis through the WebClient.

ZEUS[®] WebWorkflow

ZEUS[®] WebWorkflow provides an Employee Self Service environment establishing workflow based decentralised system administration. Employee Self Service requests for absences, holidays, totals or bookings updates are made via the web and are then transferred to a supervisor for authorisation.

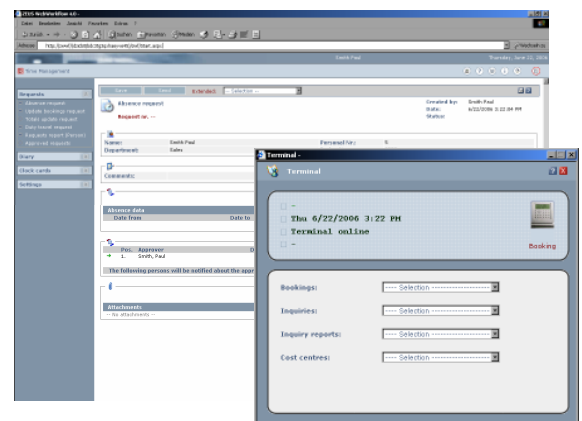
Individual authorisation processes can be defined for each request type, each absence type, each person or each personnel group.

Group diaries for managers, personal diaries for employees, delegate approval regulations and secretary functions complete the features.



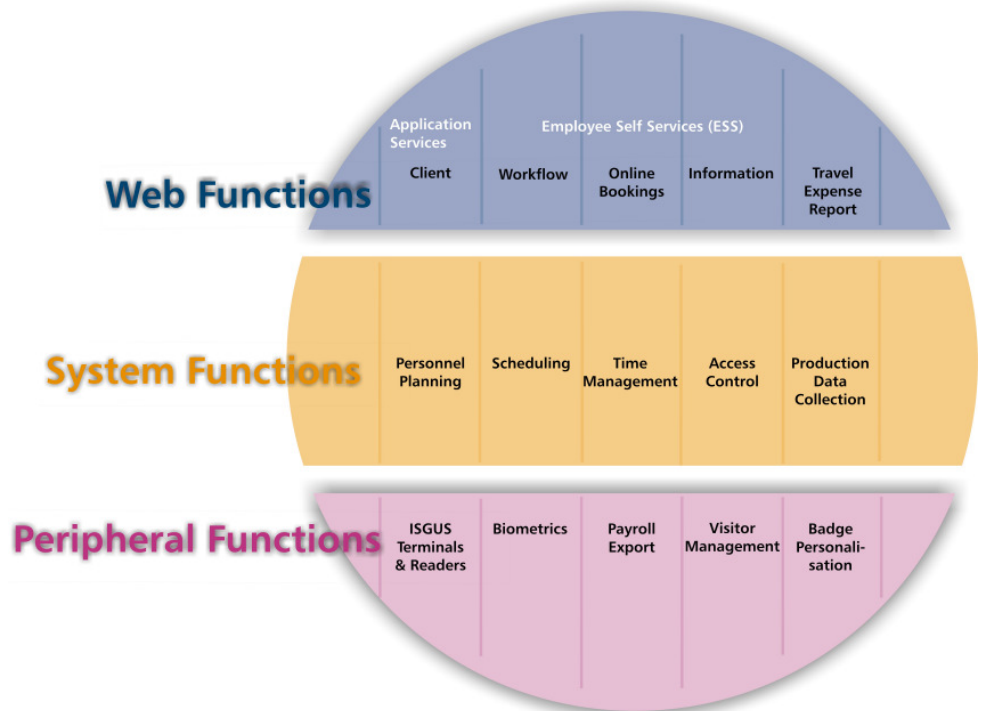
ZEUS[®] WebBooking

Online bookings can be made through the Internet via a simple mouse click, providing real time account and balance information in the same way as on any terminal of the ISGUS IT series.



The WebTechnology from ISGUS

- Worldwide access opportunities
- Future oriented ASP.net technology providing superior performance compared to conventional JAVA applications
- Multi-lingual modular solutions
- Support of all standard browsers
- Platform independent clients
- Standard DBMS Oracle and Microsoft SQL server
- No software installation on client PC's required
- High data security through 128 Bit SSL encryption



Payroll

Seamless transfer to all standard payroll programs and external applications via a wide range of interfaces.



ISGUS GmbH
Oberdorfstraße 18-22
D-78054 Villingen-Schwenningen
Phone +49 77 20/ 3 93-0
Fax +49 77 20/ 3 93-184
info@isgus.de
www.isgus.de

