



Kelio Planning+

Control your human
resources organisation

This planning assistance tool enables you to benefit from advanced features to help you organise your work.

An intuitive work area

→ Understanding of the information

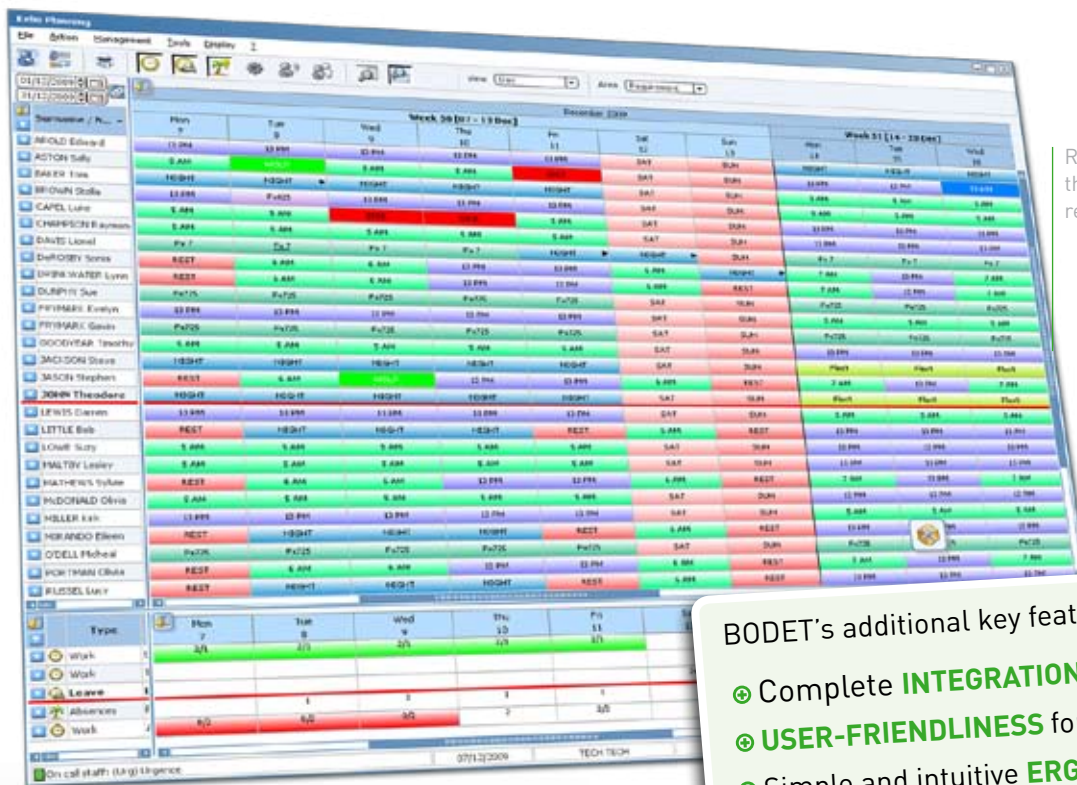
The key time management data is permanently available (planned totals, totals produced from clocking operations, estimated totals...).

→ Easy to use

The workspace ergonomics has been designed in collaboration with planners to ensure that this environment is as simple and as effective as possible in order to optimise planning time.

→ Customisation

Each planner may customise and save their workspace in order to make them more efficient in their daily tasks.



Resource schedule with the detailed view of requirements by station

BODET's additional key features:

- ⊕ Complete **INTEGRATION** with Kelio time management
- ⊕ **USER-FRIENDLINESS** for the planning workspace
- ⊕ Simple and intuitive **ERGONOMY**
- ⊕ **ADAPTABLE** to different sectors of activity:
Industry, Food production, Health, Major retail and so on.

A full HD work area

With a work area that can be fully customised, planners can allocate timetables, absences, activities* and duty rotas simply and effectively.

→ The "Resources" zone

- Customise your team's display and access an employee's file directly.
- Carry out replacements / loans simply between planners.

→ The "Totals / Details" zone

- Using the "totals" view, build the management indicators to monitor your team.
(see illustration opposite).
- Using the "details" view, compare the forecast and actual totals for an employee over a day at a single glance.

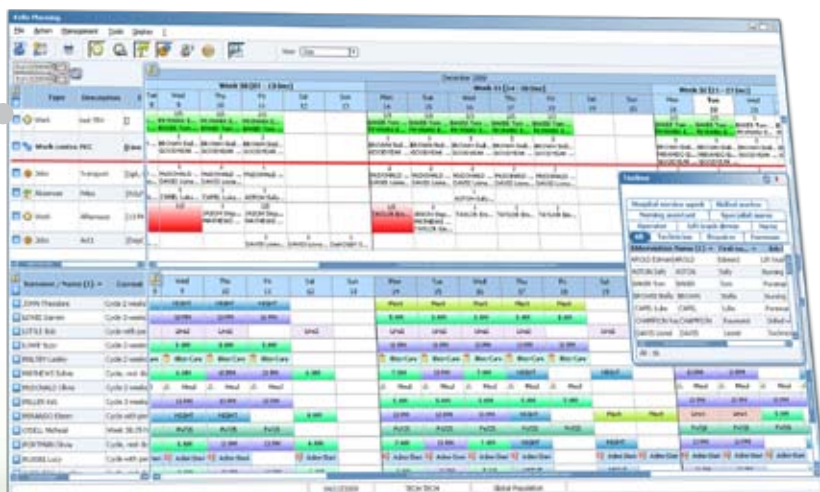
→ The "Stations / Requirements" zone

- Define your requirements by work station, schedule, activity, etc. to control your department's workload.
(see the illustration on the 1st page).
- Monitor the "forecast workload / station workload" adaptation in real time.



→ Station planning

- Get an overview of the work stations related to schedules, activities and so on.
- Find out who's working on which station easily.
- Adjust your schedules quickly by replacing or lending employees.



* If the Kelio Analytics module is activated.



→ The "Results" zone

- Build your individual management indicators for the time frame that suits you best.
- Take advantage of real time alerts set according to personal, collective or statutory constraints.

Schedule info bubbles

- Use info bubbles to understand the description of your employees' day.

Toolbox

- Plan your schedules, activities and so on using the toolbox which adapts to the active data and rights of your users.

Daily planning

- Build your timetables minute by minute for more accuracy.
- Get a clear, daily view of how your activities are allocated to your employees.
- Fine-tune your schedules.





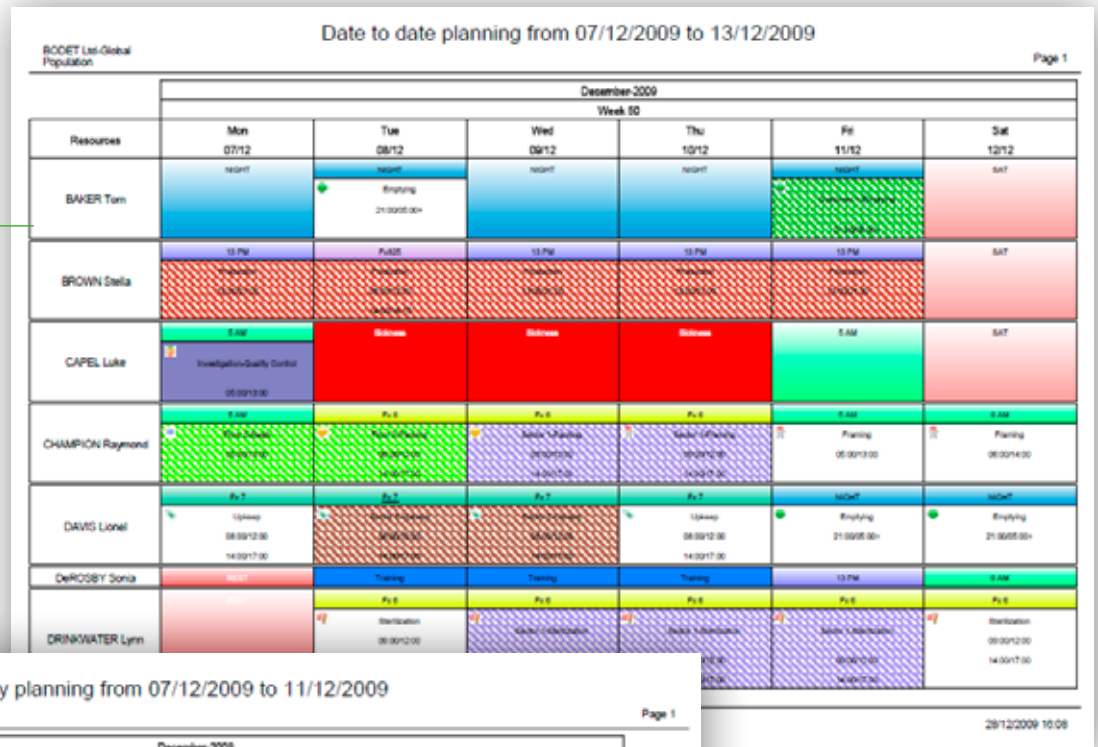
Kelio Planning+

Control your human resources organisation

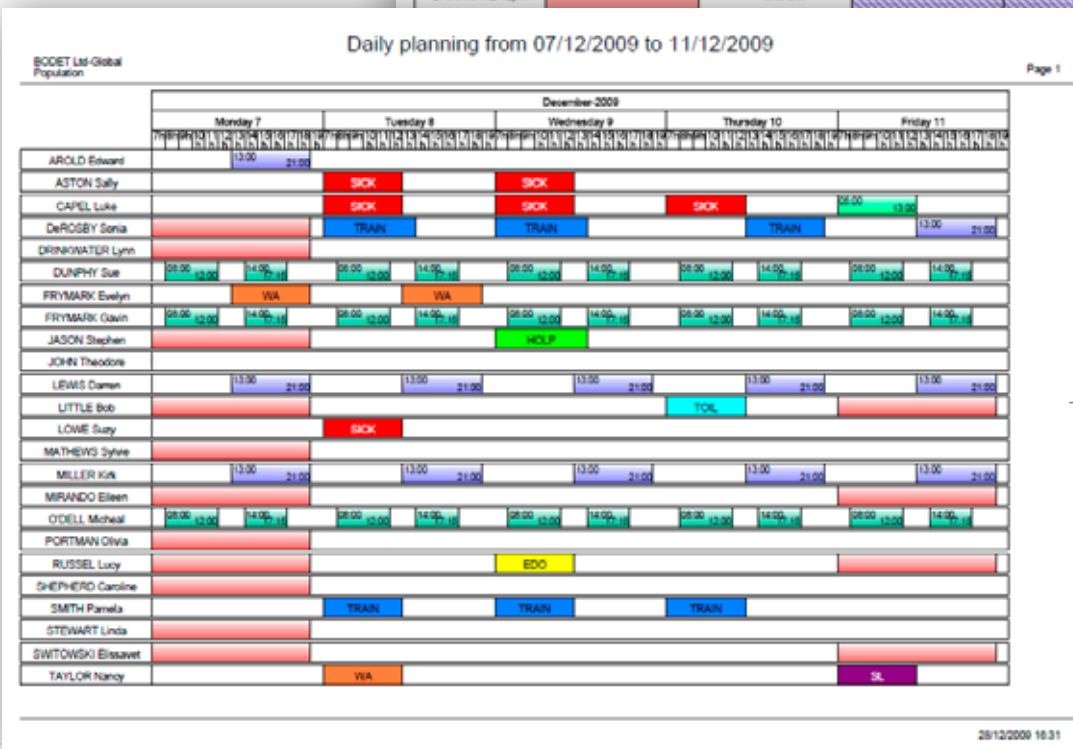
Complete, customisable reporting

With advanced configuration, a wide range of planning printouts are available in .pdf format. The results can also be exported (.xls or .csv).

Staff activity scheduling over a week.



Daily planning from 07/12/2009 to 11/12/2009



Hourly staff scheduling over a week



Autoclock Systems Ltd
 93/97 Second Avenue
 Heaton
 Newcastle upon Tyne, NE6 5XT
 Tel: 0191 2761611, Fax: 0191 2761611
 Web: www.autoclocksystems.co.uk
 Email: sales@autoclocksystems.co.uk



non-contractual information Bodet reserves the right to make certain technical, aesthetic or colour modifications, without prior notice.

AF AQ ISO 9001

ENVIRONMENT AF AQ level 1/3

Made in U.E.

REF: 65038 1D